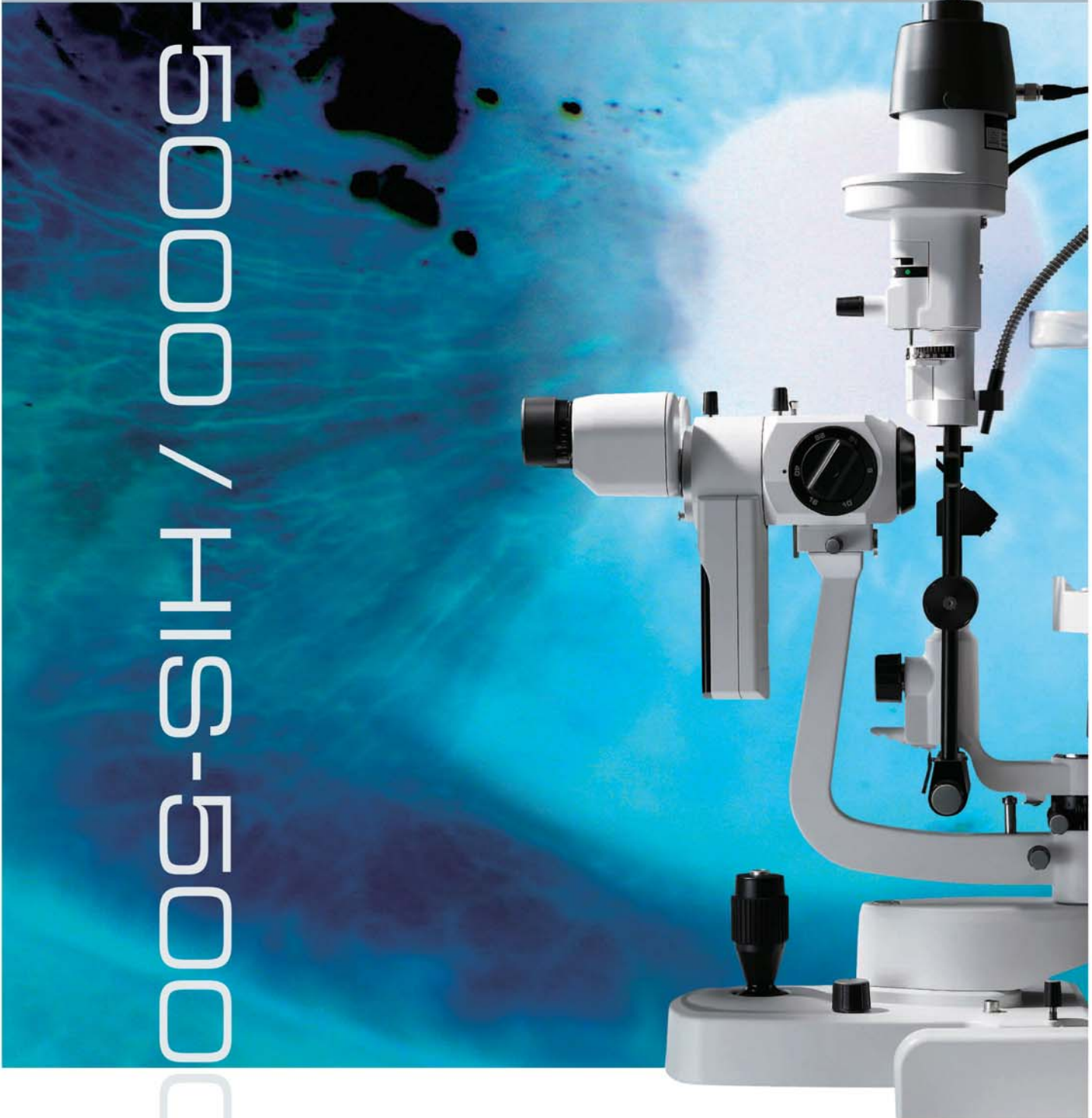


# HIS-5000 / HIS-5000

Huvtz Slit Lamp / Image Management System



## See the difference by looking through the Huvitz Slit Lamp - Experience the advanced diagnostic solution

A perfect match - The integration of the high-end Slit Lamp HS-5000 & the Image Management System HIS-5000  
HS-5000 & HIS-5000 meet professional requirements for accurate diagnoses with the utmost convenience of data recording and management. The integrated system provides a new solution, satisfying multi-tasking performance for diagnosis, data recording and management.



## HS-5000 / Slit Lamp

*HS-5000 gives you the most precise observation.*

### **Illumination system enhances brilliant fields of view**

The light source is a 12V 30W high luminance lamp that provides the highest resolution and clearest images.

### **Galilean optical system provides convenience and flexibility**

Five-position drum style magnification changer  
Wide range of magnification from 6x to 40x easily accessible by rotating the drum

### **The faster and more stable IEEE 1394 interface method applied digital camera.**

HS-5000 can achieve a maximum resolution of 1.45M pixel with the IEEE 1394 interface method, which conducts image data faster and with more stability compared with the normal USB interface method.



*Convenient and flexible with a wide range of magnification and field of view*

### **Microscope can be operated easily and accurately.**

HS-5000 deliver crisp images and a wide field of view with the global standard Galilean Converging Binocular optical system.  
(6x:38.5mm, 10x:22.2mm, 16x:15.2mm, 25x:10.5mm, 40x:6.7mm)



### **Integrated omni style joystick, easy one-handed operation**

The integrated omni style joystick is simple to control.  
A trigger button is conveniently mounted on the joystick for easy image capture.  
Images can be stored simultaneously if HS-5000 is connected to imaging devices.



*Enhanced clinical diagnosis with wide range of filters*

### **Ergonomic yellow fluorescein filter**

A yellow filter is conveniently located near the ocular for effortless insertion of fluorescein pattern.  
(Filters : Cobalt Blue, Red-Free, Grey, Heat Absorption, Yellow)



# HIS-5000 / Image Management System

## *Intuitive and user-friendly information management and processing*

### Easy and user-friendly patient information management

MS Access Database-based system allows you to search and easily manage diagnosed information, data and history of patients.



### Intuitive user interface

Intuitive tree-structured user interface allows easy access to and updates of patient information without any complicated clicking.



### Real time quick image saving

High performance progressive scan CCD camera provides quick image capture of diagnosed images in real time.



### Powerful image processing

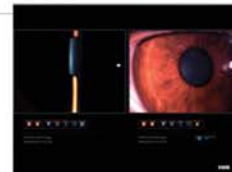
With Live Tool graphic library, all the images such as JPG, TIFF, RAW and many more formats can be adjusted for brightness, contrast, color channel, saturation, inversion, sharpness, red-free, etc.



### Image manipulation for maximum diagnosis

#### [ Compare ]

The selected images can be magnified, reduced and rotated with various graphic effects for accurate comparison and diagnosis.



#### [ Overlay ]

Correlative animation of images captured in different time frames allows you identify metastasis of symptoms.

#### [ Slide Show ]

All selected images can be shown in a slide show, which can be used for presentations.



#### [ Reference ]

Images of same symptoms can be registered or searched for the further reference.

#### [ Report Generation ]

Automatic patients' report export function in MS Words format.

#### [ Print ]

Easy single-click printing of current images.



# HS-5000 / HIS-5000



## *Revolutionary optical design* *HS-5000*

*Cutting-edge optical technology assures both high resolution and a wide field of view with the five-step magnification control. Various filters tailored for the most common diagnostics that aid in accurate assessment.*



## *Comprehensive Image Management* *HIS-5000*

*User-friendly interface and well-organized architecture provide quick and efficient management. Featuring comprehensive digital image processing and innovative enhancement.*



## SPECIFICATION

### SLIT ILLUMINATION

Slit Length (mm)	0.3~12 continuous
Slit Width (mm)	0~12 continuous
Slit Projection	1x
Aperture Diaphragms	12.5x
Filters	Cobalt Blue, Red-Free, Grey, Heat Absorption and Yellow
Slit Rotation	0°~180° continuous
Angle of Incidence	0°, 5°, 10°, 15°, 20°
Patient's Eye/Prism	80mm
Surface Working Distance	

### MICROSCOPE

Microscope	HS 5000 5x
Type	Galilean Converging Binocular
Magnification	5 Position Rotating Drum
Eyepieces	12.5x
Total Magnifications	6x, 10x, 16x, 25x, 40x
Real Fields of View (mm)	38.5, 22.2, 15.2, 10.5, 6.7
Interpupillary Adjustment	55mm~80mm

### BASE

Vertical Movement	28mm
Longitudinal Movement	78mm
Lateral Movement	98mm
Fine Base	10mm
Power Supply	Free Voltage 100~240V AC
Voltage Frequency	50/60Hz
Power Consumption	70VA
Instrument Voltage	12V DC
Halogen Bulb	12V 30W
Fixation Point Bulb	3.4V 20mA

### DIGITAL CAMERA

Image Sensor	1/2" Interline CCD
Image Size	up to 1,388 x 1,036 pixels
Cell Size	4.65 $\mu$ m x 4.65 $\mu$ m
Resolution Depth	8bit or 12bit Raw RGB, YUV 4:2:2
Transmit Method	IEEE 1394 (6pin)
Transmit Speed	400Mbps
Frame Rate	15fps, 7.5fps, 3.75fps
Lens Mount	C-Mount
Photographing	External Trigger or Software Trigger
Dimension	44mm (W) x 29mm (H) x 63mm (D)
Power Consumption	less than 3W(12V DC, from IEEE 1394 Cable)

### RECOMMENDED COMPUTER SYSTEM

CPU	Pentium IV, 2GHz
Memory	512MB (over 1GB recommended)
Video Card	ATI Radeon 9200 (128MB) or similar
System	Microsoft Windows NT (with Service Pack 6) Windows 2000 (with Service Pack 4) Windows XP Microsoft Internet Explorer 6 (Explorer 7 recommended)
Transmit Method	Standard IEEE1394a Firewire Port OHCI 1.1 Compatible (with auxiliary 12V power connector if connected to a laptop computer)
Monitor	LCD or CRT (minimum resolution 1,280 x 1,024 pixels, over 1,600 x 1,200 pixels recommended)

OPTION : PC, Table / COLOR : Dark Grey, Light Grey

Designs and details can be changed without prior notice for the purposes of improvement.

**Huvitz**

Huvitz Building 689-3, Geumjeong-dong  
Gunpo-si, Gyeonggi-do, 435-862, Korea

Tel : +82-31-442-8868

Fax : +82-31-477-8617

http : // www.huvitz.com

Distributed by

**Veatch Ophthalmic Instruments**

136 W Orion St. #3

Tempe, AZ 85283

Toll Free: 800-447-7511

Web: www.voi2020.com

E-mail: sales@voi2020.com